

763
G-SERIES
SKID-STEER LOADER



Left Side Instrument Panel



Right Side Instrument Panel



Optional Deluxe Instrument Panel

One Tough Animal

SPECIFICATIONS

Performance

Rated Operating Capacity¹
 ROC with optional counterweight
 Tipping Load
 Hydraulic Pump Capacity
 Travel Speed
 Operating Weight

763

1500 lb. (680 kg)
 1600 lb. (726 kg)
 3000 lb. (1361 kg)
 15 GPM (56 L/min.)
 7.0 MPH (11.3 km/hr.)
 5368 lb. (2435 kg)

Dimensions

Length (with bucket)
 Width (with bucket)
 Height
 Height to Bucket Pin

130.1 in. (3304 mm)
 68.0 in. (1727 mm)
 77.3 in. (1963 mm)
 114.5 in. (2909 mm)

Engine

Make/Model
 Fuel/Cooling
 Cylinders
 SAE NET HP/Displacement
 Fuel Tank Capacity

Kubota/V2203-EB
 Diesel/Liquid
 4
 46/134 in.³ (2,2 L)
 14 gal. (53 L)

Operation

Steering and Drive
 Hydraulics

Forward, reverse, travel speed and steering controlled by two hand levers. Raise/lower lift arms and dump/rollback bucket controlled by two foot pedals or optional hand controls. Hydrostatic, four-wheel drive.

Transmission

Standard Features

Adjustable Cushion Seat Automatically Activated Glow Plugs Bobcat Interlock Control System (BICS™) Bob-Tach™ Dual Path Cooling System Engine/Hydraulic Shutdown	Front Auxiliary Hydraulics Front & Rear Lights Lift Arm Support Meters/Gauges/ Warning Lights Operator Cab Parking Brake Seat Bar	Seat Belt Spark Arrestor Muffler 10-16.5 Bobcat Heavy-Duty Tires
---	---	---

Options/Accessories

Advanced Control System (ACS) Advanced Hand Controls Backup Alarm Cab Enclosure Catalytic Purifier Counterweight Kit Deluxe Cab Deluxe Cab w/Heater Deluxe Instrumentation	Engine Block Heater Flasher/Strobe Lights Horn Hydraulic Bucket Positioning ² Keyless Start System Rear Auxiliary Hydraulics Rear Stabilizer Segmented Tires Service Safety Training Kit	Side Windows Skid-Steer Loader Operator Training Kit Solid Tires Sound Package Special Applications Kit ³ Suspension Seat (vinyl or cloth cover) Top & Rear Windows Water Kit Weightlog
--	---	--

Bobcat Attachments

Angle Broom* Auger Backhoe Brushcat™ Rotary Cutter Buckets Chipper* Combination Bucket Concrete Mixer* Concrete Pump* Cutter Crusher Digger Dozer Blade* Dumping Hopper Ejector Bucket Farm Grapple (for use with utility forks or bucket)	Front Scarifier Grader* Hydraulic Breaker ⁴ Hydraulic Pallet Fork Industrial Grapple Landplane Landscape Rake Pallet Fork Planer* Rear Stabilizer Snow Blade Snowblower* Sod Layer* Soil Conditioner*	Scraper Sweeper Three-Point Hitch Tiller Tilt-Tatch Tracks Tree Spade Trench Compactor Trencher Utility Fork Vibratory Roller Whisker Push Broom
---	---	---

*Attachment Control Kit Required.

Powerful. Smooth. Fast.

Here's everything you want in a compact loader!

The Bobcat® 763 G-Series loader delivers plenty of power, lift capacity, lift height and travel speed.

The 763's 46-hp liquid-cooled engine produces top traction and breakout force for excavating and handling large loads. There's also a 15-gpm hydraulic pump for efficient attachment performance.

The long wheelbase provides a smooth, comfortable ride and helps give this rugged loader 1,500 pounds of rated operating capacity.

As with any Bobcat loader, you get a wide choice of quick-mounting Bobcat attachments for your 763. The operator can easily replace a bucket with a backhoe, pallet fork, landscape rake, sweeper, tiller, grapple and many more.

Greater Comfort

The G-Series cab is designed with the operator in mind!

- Excellent visibility to sides, front and rear corners of loader.
- Roomy comfort for operators of all sizes.
- Rear-pivot seat bar.
- State-of-the-art instrumentation.
- Fully-enclosed cab and heating system available.
- Fully-adjustable suspension seat available.

1500 LB.

Rated Operating Capacity
 1600 lb. with optional counterweight kit

114.5 IN.

Lift Height

46 HP

Liquid-Cooled Diesel Engine

Optional G-Series Deluxe Instrumentation Package includes:

- Multi-language capability
- System diagnostic capability
- All gauges read in metric or English units
- Engine/hydraulics systems shutdown
- Keyless start security
- Job clock
- Digital clock
- Help screens
- Lockouts feature

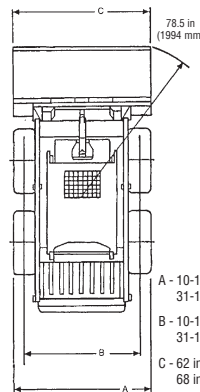
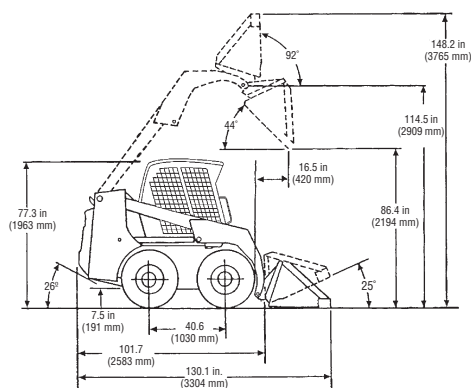
NOTE — Where applicable, dimensions are in accordance with Society of Automotive Engineers (SAE) and ISO standards. Specifications and design are subject to change without notice. Pictures of Bobcat skid-steer loaders may show other than standard equipment. All dimensions are given for loader equipped with standard tires. All dimensions are shown in inches. Respective metric dimensions are enclosed by parentheses. Bobcat Company complies with the requirements of ISO 9001 as registered with BSI.

¹ Operating capacity rated with standard digging bucket according to SAE standard J818. OPERATING CAPACITY TO EQUAL NO MORE THAN ONE-HALF THE TIPPING LOAD.

² Bucket positioning helps operator keep the same tilt of the load during lifting.

³ Includes Lexan front door, top and rear windows.

⁴ Special application kit (see #3) must be used.



B-1723